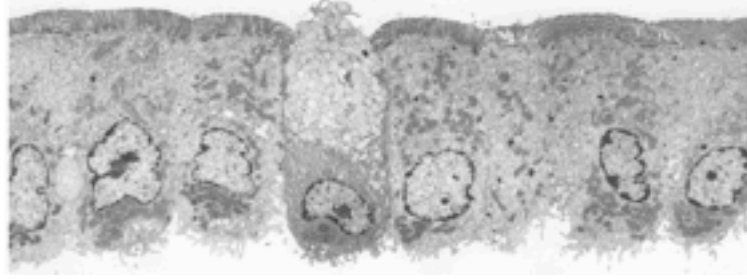


# The Microbiome in Health and Disease



**Tuesday October 19<sup>th</sup>, 2010**

**Registration (free) and Breakfast - 8:00-9:00AM**

**Conference: 9:00-5:00PM**

Please join us for the HDDC's Biannual New England Conference on "Frontiers in Mucosal Immunology" (FIMI).

The Rotunda: Joseph B. Martin Memorial Conference Center  
3<sup>rd</sup> floor, New Research Building, Harvard Medical School

**Schedule: The Microbes: 9.10 – 10.10AM**

**Laurie Comstock** (BWH/Channing Labs): *B. fragilis* polysaccharide expression in vivo.

**Pratik Shah** (MGH): Oxygen availability in the gut and cholera.

**BREAK: 10.10-10.30AM**

**Bioinformatics and Computational Analyses of the Microbiome: 10.30AM – 12:00PM**

**Curtis Huttenhower** (HSPH): Understanding gene functions in the human microbiome

**Georg Gerber** (BWH): Computational Discovery of Microbial Shared Growth Trajectories.

**Peter Turnbaugh** (Harvard University): Dietary Effects of the Human Microbiome.

**LUNCH: 12-1PM (provided)**

**Human Systems and Animal Models: 1:00-2.30PM**

**Wendy Garrett** (DFCI): Enterobacteriaceae and Maternally Transmitted Colitis

**Javier Ochoa-Repáraz** (Dartmouth Medical School): Guts, Bugs and the Brain.

**Michael Docktor** (Children's Hospital): The Oral Microbiome in Pediatric IBD.

**BREAK: 2.30-2.45PM**

**Microbiome Boot Camp/How-to: 2:45-4.45PM**

**Lynn Bry**: Patient Protocols, Sample Collection and Validation in Germfree Systems.

**Andy Onderdonk**: Deep Culturing: Microbiological Analyses of Primary Samples

**Peter Turnbaugh**: Bioinformatics Tools to Analyze Metagenomic Datasets.

**Georg Gerber**: Computational Tools and Methods to Analyze Time Series Datasets

Continental Breakfast and Lunch will be provided  
Directions, and parking arrangements can be found on our website.

Hosts: Wayne I. Lencer and Richard S. Blumberg, Co-Directors HDDC

Co-organizers: Nicholas Mantis and Lynn Bry

For more information please visit our website at: <http://www.hms.harvard.edu/hddc/>  
or contact the HDDC Administrator at: (617) 919-2543 or [hddc@childrens.harvard.edu](mailto:hddc@childrens.harvard.edu)